



Coffee Brief

Date: 6.23.2025

Preparedness Levels & Alaska Fire Activity

Alaska	4
National	3

Light Initial Attack Activity New Fires and Acres: 9 fires for 200.8 acres

There are currently 24 staffed fires and 3 Complexes. Yesterday's large fire growth was ~85,206 acres

Sources: National and AICC Situation Dashboard, AICC Aircraft Logs

Prioritized Incident Details

ALASKA MAC GROUP PRIORITIES – DECISION 6/22/2025	
1. Initial Attack	
2. #237 - Bear Creek (CIMT AK Team 1 <u>inbrief 6/22 @ 1800</u>), FAS	
3. #223 - Himalaya Road (CIMT SW Team 3 <u>inbrief 6/23</u>), FAS	
4. #222 - Seven Mile Lookout (IMT3 Ordered <u>inbrief 6/24 @ 1500</u>), TAS	
5. #'s 214,240,241,242,243,256,265 - Ptarmigan Complex, UYD	
6. #'s 128,182,191,251,277,279 - Roundabout Complex (IMT3 Ordered <u>inbrief 6/25 @ 1200</u>), GAD	

Source: AMAC Incident Prioritization List

Resources

Aviation within Alaska	Total
Smokejumpers	~12 available
Air Tactical	3
Air Tankers	3
Scoopers	2
Single Engine Scoopers	4
Utility	2
Helicopter, Type 1	1
Helicopter, Type 2	
Helicopter, Type 3 Standard	
UAS	2
Total Aircraft	17

Crews Committed within Alaska	Total
Type1 / IHC	3
Type 2 IA	4
Type 2	5
Total Crews	12

AIRSPACE/TFRs

Bear Creek
Seven Mile Lookout
Billy Creek
Nelchina Glacier

SMOKEJUMPERS

Anticipated smokejumpers available: ~12
~ 75 SMKJ's committed + 2 as single resources – DIVS to Canada

Smokejumper Demobilizations

Yesterday: 4
Planned for today: 0

CREWS

Pending Orders at AICC

CR1I - Crew, Type 1 or 2 IA	12
CR2A - Crew, Type 2 Any	2
CR2I - Crew, Type 2 IA	2
CRW1 - Crew, Type 1	12
CRW2 - Crew, Type 2	10
CRWA - Crew, Type Any	6
Grand Total	44

CREWS / STATUS

CREWS / STATUS
At Incident
CR2I - GANNETT GLACIER
CR2I - R10 Crew
CR2I - White Mountain
CR2I - YUKON - Type 2 IA
CRW1 - Chena IHC
CRW1 - Midnight Sun IHC
CRW1 - Pioneer Peak IHC
CRW2 - AK2CC - TCC - Paradise
CRW2 - AK2CC CATG
CRW2 - AK2CC SES K River 1
CRW2 - Fairbanks 1
CRW2 - North Star
Available
CR2I - Tanana Chiefs
CRW2 - AK2CC - RMF - Big River
Reserved
CRW2 - AK2CC - Nulato Hills - Nulato Hills 1
CRW2 - AK2CC RMF Mooseheart

CREW JET MOVEMENT

2025 Lower 48 Crews to Alaska											
Jet #1		Jet #2		Jet #3		Jet #4		Jet #5		Jet #6	
MOB	6/23	MOB	6/25	MOB	6/27	MOB		MOB		MOB	
LWD		LWD		LWD		LWD		LWD		LWD	
DMOB		DMOB		DMOB		DMOB		DMOB		DMOB	
CRW1 PLUMAS IHC		ZIG ZAG IHC		Big State Wildfire							
CRW1 Smith River IHC		OWF Methow		A.S.I Arden Solutions 12A							
CRW1 Mendocino IHC		PatRick Environmental, Inc. NCC		A.S.I. Arden Solutions 12B							
CRW1 Tallac IHC		Central Oregon		PatRick Environmental, INC NCC 14C							
				PatRick Environmental, INC NCC 18A							

OVERHEAD/TEAMS

- 6 to start the day
- 1 T3 IMT Order pending for Roundabout Complex
- 1 CIMT assigned to the Bear Fire

Source: IROC Reports, [National Smokejumper Status Report](#), AK Incident Aircraft Tracking Spreadsheet & AICC Documentation

Weather Summary

It will be another hot day for most of mainland Alaska with temperatures in the 80s and relative humidities into the mid to low 20s, lowest across the Tanana Valley and Copper River Basin. Winds will be light, with marginally gusty winds where storms develop in the eastern Interior. Thunderstorms are expected this afternoon across a smaller footprint but still including the northern part of the state and the eastern Interior. Though there are no Red Flag Warnings for lightning today, fuels are so dry that any lightning is likely to lead to multiple ignitions once again. Though individual cells will bring ample rainfall directly underneath, little movement of cells means there will still be large footprints that receive little to no rain, and lightning ignitions on the periphery of these storms is very likely.

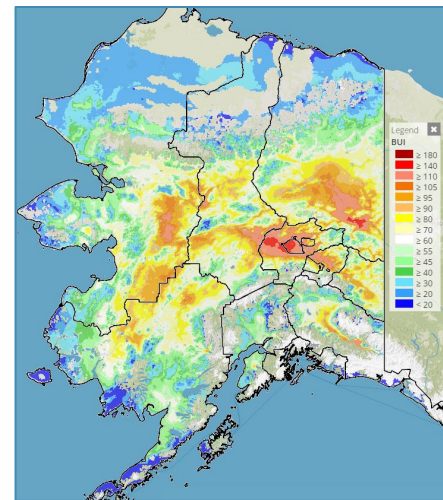
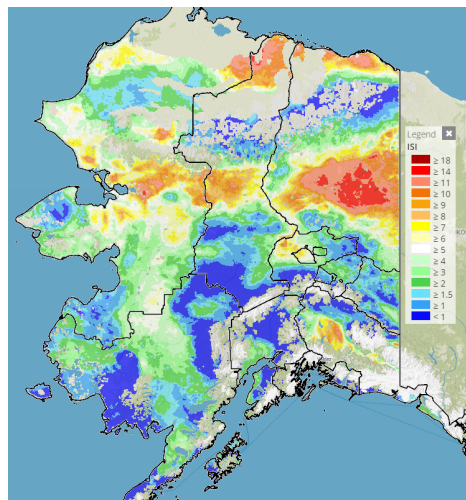
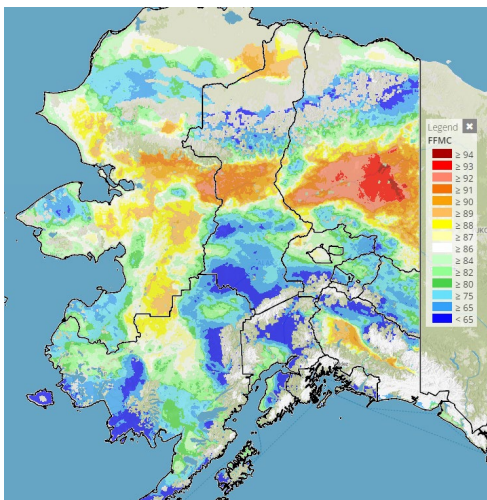
By Monday, the high will shift northward and the ridge will be undercut by a low pressure system in the Gulf of Alaska. This will allow some easterly waves to start moving through the pattern, bringing some wetting rains and a few thunderstorms to the eastern side of the mainland. Winds may also be breezy at times as the gradient tightens between the high to the north and low to the south. It is likely that the northeastern and western Interior will remain dry with this pattern, though the moderation of other areas will be a welcome relief.

Source: National Weather Service

Fuels Status [Alaska Fire and Fuels Map](#)

Fuels/Fire Potential

- The Yukon Flats and regions south of the Brooks Range exhibit the highest levels of fine fuel and ISI indices, signaling a considerable potential for ignition and rapid spread.
- The subsurface duff layer (BUI) remains extremely dry across much of the interior, indicating that these areas are receptive to lightning ignitions and retain significant fuel loads available for combustion.
- Fine fuels are predicted to drop to levels which are unable to support surface spread for a large portion of the interior beginning Tuesday.



When encountering a mismatch between a point value based on actual weather observations and the background grid, please discount the grid and go with the points.

For additional fuels information visit <https://akff.mesowest.org/>

Sources: AICC Predictive Services – [Fuels/Fire Danger](#) web page, [Alaska Fire & Fuels](#) web page, Nathan Perrine AICC Analyst

The Coffee Brief is posted at PLs 4 and 5 only.

